



# Domestic Furniture 2021



Jan 2021

All pricing or specifications shown within is proprietary, confidential and subject to change based on factory or general economic conditions. J&R Home Products Ltd. reserves the right to make any product spec or price changes due to availability or conditional changes.



[jrhome.com](http://jrhome.com)

---

**Sit Back, Relax, Stay Warm.**

*Staycations and staying Home has made the perfect patio and back yard space even more important. **Patioflare** has evolved its line up to include more innovative pieces that fit any environment. We aim for versatility, and flexibility in our larger pieces and compact, easy to store, small footprint solutions to fit most back yard needs.*

*We continue to provide quality and durability in each piece and we back up all our products with a warranty and a service line for customers to call for any assistance they may require.*

*Combine you **Patioflare** piece with one of our **Paramount** Heaters to add warmth to your experience.*

*Many of our sets now feature Polyspun Fabric. Polyspun is manufactured with 100% spun filament polyester. It is a heavy weight, thick, durable fabric that has the look and feel of cotton and is very soft. It is machine washable in warm water, tumble dryer safe on the low heat cycle. Polyspun fabric is the perfect choice for outdoor furniture because it is easy to care for, extremely durable, wrinkle resistant, has soil release properties, has excellent color retention and will look new for years.*



*We do our best to have all items available however due to the seasonal nature of the business some items may be temporarily out of stock.*

*JR Home can confirm availability upon order.*

# Arias Conversation Set

## Product Specs



### Size:

Table: 21.65"L x 39.37"D x 19.68"H

Side Table: 21.65" x 21.65" x 19.68"

Bench: 48.8"L x 33.8"D x 33.7"H

Chairs (2) : 23.22"L x 33.19"D x 33.7"H

### Carton size:

51.58: x 35.83" x 28.35"

GW/NW (lbs); 158 /143

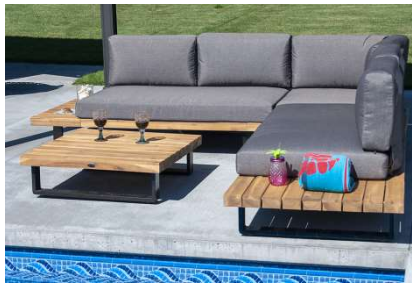
1 per pallet

### FEATURES

- Combining Wood, metal and rope creates this stunning look conversation set.
- Does not include cushions
- Powder coated metal frame, with Acacia wood and rope.



# Acacia Wood Corner Sofa Set



## Product Specs

### Size:

**Overall:** 100"L x 100"W x 26.38"H  
**3 Seat Bench -** 100.39"L x 32.28"W x 26.38"H

**2 Seat Bench-** 68.11"L x 32.28"W x 26.38"H

**Table:** 32.28"L x 32.28"W x 9.84"H  
**Seat Height** 15"

### Carton size: (2)

**Box 1:** Table and 2S: 70.9" x 35"W x 13"H

**Box 2** 3S: 76"L x 35"W x 14.6"H"

**GW/NW (LBS):** 162 / 153.2

**2 double pallets for 6 units.**

### FEATURES

- Beautiful corner acacia wood and fabric sofa set with Aluminum Legs
- Easily assembles for a quick seating solution, includes all hardware
- Polyester 200 gr 5 cm cushions for comfort
- Lightweight for ease of mobility and durable for long lasting use

# Arthur Bar Set Table with 4 stools

## Product Specs

**Size:**

Table: 33.47" x 33.46" x 41.33"

Stools: 17.71" x 15.75" x 30.3"

**Carton size:**

43.3" x 42.52" x 10.62"

GW/NW (lbs) 117 / 106

7 per pallet

### FEATURES

- Stunning hand finished Acacia wood frame table and bar height stools with black rope accents.
- Solid wood construction, convenient bar height and easy to assemble.
- Chairs have comfortable black corded seats.
- All in one box KD packed.



Ships  
complete in  
1 box!



# Extra Large Sarah Modular Set

## Product Specs



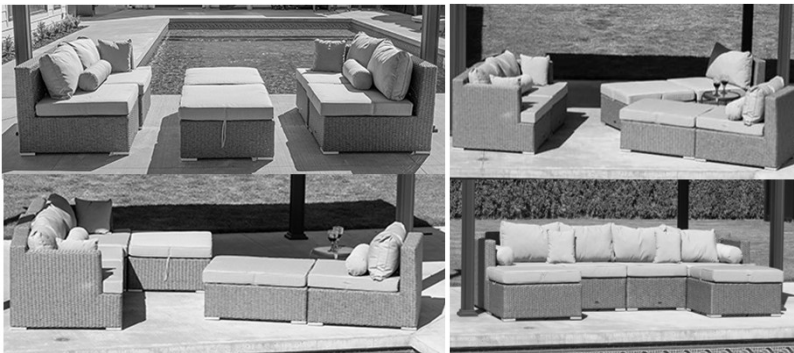
PF-CS305-GY

134"



Dark grey wicker/dark grey fabric

### Multiple configurations from one set



**Size:**  
**Single Chairs Left and Right:** 32.68" x 34.25" x 27.56"  
**Armless Chairs (2):** 34.25" x 27.95" x 27.56"  
**Ottomans (2):** 32.68" x 27.95" x 12.60"

**Carton:**  
**Single Chairs (L&R 2pc) :** 37.79" x 44.94" x 11.16"  
**Armless chairs(2):** 40.94" x 28.74" x 28.35"  
**Ottomans (2):** 33.46" x 28.74" x 28.34"

**GW/NW (LBS):** 185.2 / 152.1  
**1 per pallet**

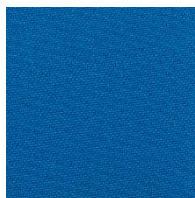
### FEATURES

- Versatile set with many possible combinations
- Powder coated steel frame for strength and durability
- Premium hand woven double ½ round wicker
- Set includes, left and right arm chairs, 2 middle chairs and 2 ottomans
- 10 cm cushions in 230 gr polypun (includes 4 seat cushions and 4 back cushions, 2 ottoman cushions, and 2 lumbar pillows)
- Includes connectors to keep chairs in position
- Aluminum feet caps add a sophisticated accent

### Change it Up – Cushion Covers for Extra Options



**Item number**  
 PF10023 GR  
 Replacement Covers  
 Calming Green



**Item number**  
 PF10023 BL  
 Replacement Covers  
 Enlightening Blue



**Item number**  
 PF10023 GY  
 Replacement Covers  
 Relaxing Grey

**Set includes: (10 pieces)**  
 Corner cushion (2pcs):  
 32.67" x 27.95" x 3.74"  
 Middle cushion (2pcs):  
 32.67" x 27.95" x 3.74"  
 Stool cushion ( 2pcs):  
 32.67" x 27.95" x 3.74"  
 Back cushion (4pcs): 28.74" x 16.53" x 3.15"

Item Number: Set: PF-CS305-GY (Grey wicker, grey cushions)

# Emmett Deep Seating Sofa Sectional Set

## Product Specs

### Size:

Table 25.6" x 25.6" x 11"

Right Chair: 32.28" x 63" x 25.19"

Left Chair: 32.28" x 54.33" x 25.19"

Carton (all in one carton)

64.56" x 37.8" x 26.37"

GW/NW (LBS): 134.5/119.05

2 per pallet

### FEATURES

- Stunning deep seating sectional made from galvanized powder coated steel frame for strength and durability
- Heavy duty reinforced seats
- Set includes 1 left lounge, 1 right chair, 1 table, 3 seat cushions and 3 back cushions (some assembly required)
- Each section has a storage area that's protected with a water resistant liner
- Includes water resistant 10 cm cushions in 230gr polypsun fabric
- Fabric is outdoor and color-fast
- Includes connectors to keep chairs in position
- 5 mm tempered glass top provides a contemporary feel



Large back cushions  
12" thick x 24" H

PF-CS290PS-BK



95"



Reinforced Seats with  
waterproof liner and storage  
under seats

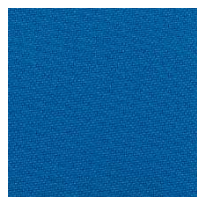
### Item numbers

Grey wicker/dark grey fabric  
With storage: PF-CS290PS-BK

## Change it Up – Cushion Covers for Extra Options



**Item number**  
PF10022 GR  
Replacement Covers  
Calming Green



**Item number**  
PF10022 BL  
Replacement Covers  
Enlightening Blue



**Item number**  
PF10022 GY  
Replacement Covers  
Relaxing Grey



Ships  
complete in  
1 box!

### Set includes: (6 pcs)

Lounger cushion (1pc):

59" x 32.68" x 3.74"

Seat cushion (2pcs):

25.39" x 28.74" x 3.74"

Back cushion small (2pcs):

26.37" x 20.47" x 3.15"

Back cushion bigger (1pc):

29.92" x 20.47" x 3.15"

Item Number: PF-CS290PS-BK (dark grey and dark grey)

# Evan Sofa Set

## Product Specs

**Size:**

**Sofa:** 29.5" x 76.77" x 25.19"  
**Stool:** 25.19" x 25.19" x 12.6"  
**Table:** 25.19" x 25.19" x 12.6"

**Carton:** 30" x 78" x 26.37"

**GW/NW (lbs):** 116 / 112.2

**2 per pallet**



Ships complete in 1 box!

### FEATURES

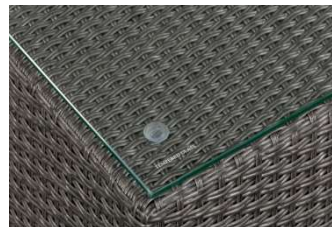
- Powder coated steel frame for strength and durability
- Premium hand woven double ½ round wicker for a premium look
- Set includes a 3 seat sofa, ottoman and coffee table
- 10 cm cushions in 230gr polyspun: 3 seat cushions, 3 back cushions, and one ottoman cushion in grey fabric
- 5mm tempered glass on table



Separate ottoman allows you to create a lounger on either side



**Item numbers**  
 Grey wicker/dark grey fabric  
 PF-CS308-GY

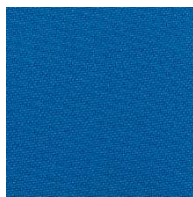


Tempered Glass for table

## Change it Up – Cushion Covers for Extra Options



**Item number**  
 PF10021 GR  
 Replacement Covers  
 Calming Green



**Item number**  
 PF10021 BL  
 Replacement Covers  
 Enlightening Blue



**Item number**  
 PF10021 GY  
 Replacement Covers  
 Relaxing Grey

**Set includes: (7 pcs)**  
 Seat cushion (3pcs):  
 23.22" x 25.98" x 3.74"  
 Stool cushion (1pc):  
 25.19" x 25.19" x 3.74"  
 Back cushion (3pcs):  
 24" x 9.44" x 3.14"



# Napier Sofa Set

## Product Specs



### Size:

**Table:** 24.8"W x 24.8"L x 13"H  
**3 corners:** 28.75"W x 28.75"L x 26"H

**2 middles:** 28.75"W x 28.75"L x 26"H

**Carton 1:** 29.5"L x 33"W x 26"H  
(corner sofa & 1 table)


**Carton 2:** 29.5"L x 33"W x 26"H (2 corner sofas)

**Carton 3:** 29.5"L x 29.5"W x 26"H (2 middle sofas)

**GW/NW (LBS):** 172.2 / 155.3

**Each box is UPSable  
Or 1 per pallet**

### FEATURES

- Galvanized powder coated steel frame for strength and durability
- Set includes 3 corner chairs, 2 middle chairs, 1 table, 5 seat cushions, 5 back cushions and 3 end cushions
- Water resistant 180g poly cushions for comfort
- Includes connectors to keep chairs in position 
- 5 mm tempered glass top provides a contemporary feel



Multiple configurations from this one set.



Dark brown wicker, beige fabric



PF-CS240-BR MO  
Dark brown wicker with beige cushions

Item Number: PF-CS240-BR MO (dark brown wicker, beige cushions)

# Tylor Aluminum Conversation Set

## Product Specs

### Size:

Table 39.4" x 19.68" x 15.75"

Chair 2: 24.8" x 24.19" x 26.77"

Bench: 46.46" x 24.19" x 25.77"

### Carton size:

51.18" x 23.23" x 22.83"

GW/NW (LBS): 57.32 / 46.29

6 per pallet

new



### FEATURES

- Beautiful conversation set with worry free aluminum frame.
- Poly, D20 cushions with 10cm seat cushions and 8cm back cushions
- All in one box KD packed.
- Easily assembles for a quick seating solution

## Aluminum Frame



Ships complete in 1 box!



# Sam Aluminum Chat Set



## Product Specs

**Size:**

Table: 17.72" x 17.72" x 17.72"

Chair (2): 24.8" x 24.19" x 26.77"

**Carton size:**

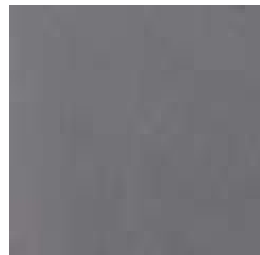
45.27" x 23.23" x 15.36"

**GW/NW (LBS): 31 /23.36**

**6 per pallet**

### FEATURES

- Beautiful oversized deep seating chat set with worry free aluminum frame
- Dark Grey cushions complement matt black frame.
- 230 gr Polyspun fabric
- Three sided table for easy storage
- Easily assembles for a quick seating solution
- All in one box KD packed.



Ships complete in 1 box!

# Whylie 3 PC Wicker Chat Set

## Product Specs

### Size:

Chair: 27.56" D x 31.10" W x 37.01"H

Table: 21.65" x 21.65" x 20.87"H

KD Carton: 31.1" x 26.38" x 20.87"

GW/NW (LBS): 59/52

Each box is UPSable  
Or 4 per pallet

### FEATURES

- Beautiful hand woven wicker chat set
- Set includes 2 chairs, 1 table with woven wicker top and glass
- Water resistant 7cm 230 gr/m2 polypun 2" cushions for durability and comfort
- 5mm tempered glass and wicker weave top
- Silver foot caps provide a sophisticated accent



Matt black wicker with  
blue cushions



Ships  
complete in  
1 box!



# Melody 3 Piece Chat Set



## Product Specs

**Size:**

Chair:(2): 24.2"L x 23.45"D x 28.35"H

Table: 15.74"L x 15.74"D x 14.76"H

**Carton size:**

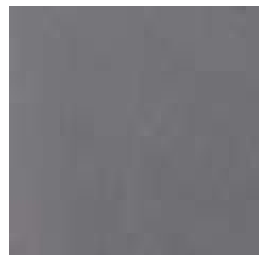
1set/carton: 40.15" x 22.44" x 8.66"

**GW/NW (lbs): 39.7 / 37.5**

**8 per pallet**

### FEATURES

- Beautiful chat set with durable steel frame.
- Poly 180gr, D17 cushions with 5cm seat cushions
- Tinted 5mm glass table top
- All in one box KD packed.



Ships  
complete in  
1 box!

# Ivan Conversation Set

Available In Two Colors

## Product Specs

### Size:

Chair (2): 22.83"L x 22.83"D x 28.35"H

Bench: 41.34"L x 22.83"D x 28.35"H

Table: 29.52"L x 15.74"D x 14.57"H

### Carton size:

1 set/carton: 40.16" x 22.44" x 14.56"

3 per pallet

### FEATURES

- Beautiful conversation set with durable steel frame.
- Poly 180gr, D17 cushions with 5cm seat cushions
- 5mm tempered glass on table top
- All in one box KD packed.



Ships complete in 1 box!



PF10030 BK  
Black wicker, Grey fabric

PF10030 BR  
Brown wicker, beige fabric



Item Number: PF10030 BK Black wicker, Grey fabric, PF10030 BR Brown wicker, beige fabric

# Classic KD Wicker Muskoka Chair

## Product Specs

Size: 33.86" x 37.4" x 34.25"  
Seat height: 11.5" + 2" cushion

Carton Size:  
36.22"W x 25.2"L x 8.27"H

GW/NW (LBS): 26/15.43

Each box is UPSable  
Or 18 per pallet

### FEATURES

- Classic Muskoka Chair is perfect for those people who prefer a relaxed laid back feeling
- Hand woven PE wicker and durable powder coated steel frame provide top quality comfort & durability
- Wide arms for added comfort & style
- Includes 2." cushion in 180gr polyester
- Silver foot caps provide a sophisticated accent
- Easy assembly for a quick seating solution
- Available in 4 great colors



**PF-CH338-BK**  
Black Wicker  
Dark Grey Fabric



**PF-CH338-GY**  
Light Grey Wicker  
Dark Grey Fabric



**PF-CH338-LBR**  
Caramel Brown Wicker  
Beige Fabric



**PF-CH338-BR**  
JR Brown Wicker  
Beige Fabric



Ships  
complete in  
1 box!

# NEW Comfort Height KD Wicker Muskoka Chair

## Product Specs

Size: 33.85" x 37.4" x 38.58"  
Seat height: 15.5" + 2" cushion

Carton Size:  
36.22"W x 25.2"L x 8.27H

GW/NW (LBS): 26.46/19.84

Each box is UPSable  
Or 12 per pallet



New taller 18"H  
seat height (a full  
4" higher seat  
than our classic  
version)



### FEATURES

- Our new comfort version Muskoka Chair has a seat height a full 4" taller than our classic Muskoka for those people who prefer a higher sitting experience - great for anyone who wants to stand up easier
- Hand woven PE wicker and durable powder coated steel frame provide top quality comfort & durability.
- Easy assembly
- Wide arms for added comfort & style
- Includes 2.5" cushion in 180gr polyester
- Silver foot caps provide a sophisticated accent
- Available in 2 great colors



Available in 2 great colors.



**PF-CH338C-BK**  
Black Wicker  
Dark Grey Fabric



**PF-CH338C-LBR**  
Carmel Brown Wicker  
Beige Fabric



Ships  
complete in  
1 box!



# Whitney Wicker Oversized Chair

## Product Specs

**Size:**  
34.64" x 35.43" x 32.68"

**Carton size:**  
38.18" x 27.95" x 22.44"

**GW/NW (LBS):** 37.48 / 33

**2 per pallet**

### FEATURES

- Beautiful oversized deep seating wicker chair with polypun 230 gr 5 cm seat and back cushions for added comfort
- Hand woven 12 mm wide wicker for a premium look and feel.
- Durable steel frame for long lasting use
- Easily assembles for a quick seating solution, includes hardware



**Ships  
complete  
in 1 box!**



Multi Grey Wicker / Dark Grey Fabric

# Eurochord Outdoor Rocking Chair

## Product Specs

**Size:**  
25.8"L x 36.36"D x 38.77"H

**Carton size:**  
41.52"x 29.20"x 8.14"

**GW/NW (LBS): 30.9 /23.2**  
12 per pallet

### FEATURES

- Beautiful oversized deep seating wicker rocker with Eurochord seat and back for comfort
- Acacia wood frame in teak look finish
- Hand woven Eurochord for a premium look and feel
- Easily assembles for a quick seating solution, includes galvanized steel hardware



**Ships  
complete  
in 1 box!**



# Wood Portable Lounge Chair

## *With Attachable Leg rest*

## Product Specs

**Size:**

55.12"L x 24.4"W x 39.37"H

**Carton size:**

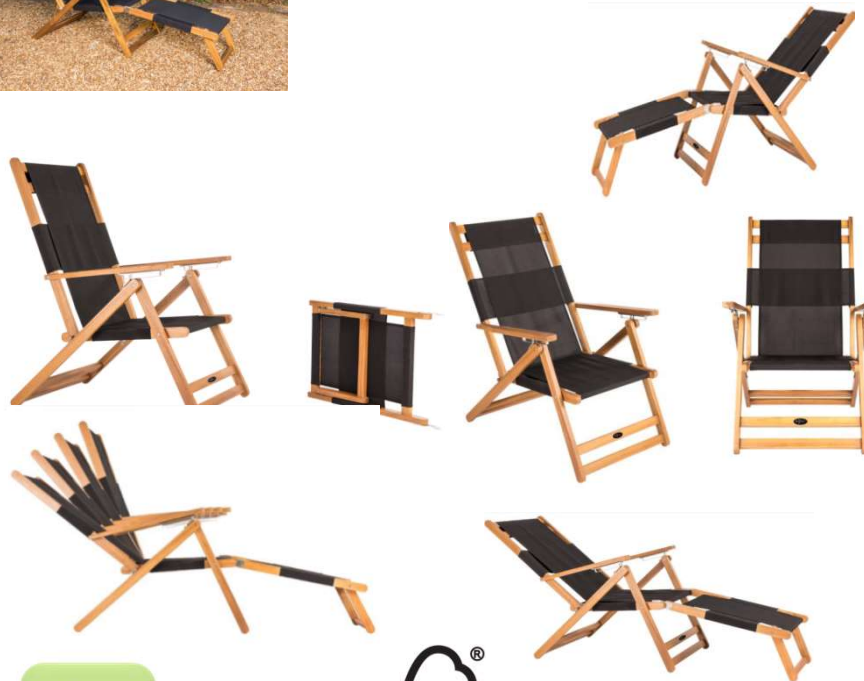
42.52"L x 27.56"W x 5.39"H

**GW/NW (LBS): 22.49 / 17.2**

**24 per pallet**

### FEATURES

- Made from solid FSC Acacia wood and breathable all-weather fabric gives a premium feel to this handy chair
- All 304 grade Stainless steel hardware prevents any rusting issues
- Comfortable, adjustable lightweight design makes it easy to transport
- Natural sealed finish helps prevent weathering
- Low maintenance; just wipe down with soft cloth
- No assembly - just unfold and attach leg rest
- Chair can be used with or without leg rest
- Great for the pool, beach or deck.



Ships  
complete in  
1 box!



Available in 3 colors  
Black , Red and Navy

Item Number: PF-CH369-RD (red) PF-CH369-BL (Blue) PF-CH369-BK (Black)

# Laura KD Wicker Lounger

## Product Specs

**Size:**  
76.77"D x 25.59"W x 8.66"H

**Carton size:** 26.37" x 26.37" x 16.92"

**GW/NW (LBS):** 38.72 / 24.52

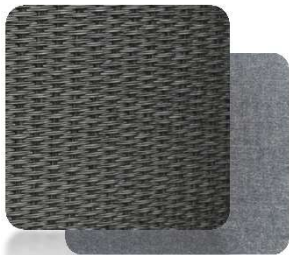
**Each box is UPSable  
Or 9 per pallet**

### FEATURES

- Beautiful hand-woven wicker KD lounge chair with robust powder coated steel frame
- Easily assembles for a quick seating solution
- Lightweight for ease of mobility and durable for long lasting use
- Includes 6 cm cushion and pillow in 230 gram polypun



**Ships  
complete in  
1 box!**



**Item numbers**  
PF-CH340PS-GY  
Grey wicker/dark grey fabric



**Item numbers**  
PF10025 BR Dark Chocolate  
Brown wicker/beige fabric

**New chocolate  
Brown Version**



Item Number: see above

20

patioflare

# Nylon Weave Folding Chair

## Product Specs

Size: 23.84"W x 30.99"D x 29.01"H

Carton size: 46.69"x 26.82"x 7.74"

GW/NW (lbs): 13.5 / 9.25

14 per pallet

### FEATURES

- Acacia wood and black nylon woven folding chair creates an easy seating solution
- Warm natural-wood oil finish with a sturdy black webbing seat and backrest
- Perfect for extra seating where ever you need it.
- Folds flat for easy storage or transport. And light weight too.
- PU finish adds a lacquer which provides a harder more resistant finish on the timber which is suitable for countries with extreme weather conditions.



# Nylon Weave Folding Bench

## Product Specs

Size: 43.71"L x 30.99"D x 29"H

Carton size:  
46.49" x 44.5" x 7.94"

GW/NW lbs: 35.28 /24.25

9 per pallet

### FEATURES

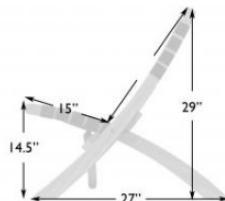
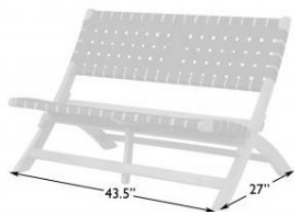
Acacia wood and black nylon woven folding bench creates an easy seating solution

Warm natural-wood oil finish with a sturdy black webbing seat and backrest

Perfect for extra seating where ever you need it.

Folds flat for easy storage or transport. And light weight too.

PU finish adds a lacquer which provides a harder more resistant finish on the timber which is suitable for countries with extreme weather conditions.



# PIKNIK Folding Bench

## Product Specs

Size:  
47.68"x 22.25"x 35.76"

Carton size:  
51.62"x 38.95"x 8.94"

GW/NW (lbs): 42/29

10 per pallet

### FEATURES

- Beautiful acacia wood folding bench with natural finish
- Folds flat for easy storage
- All in one box KD packed.
- Perfect for condos or decks.



Ships  
complete in  
1 box!

# Jackie Wicker Bench



## Product Specs

**Size:**

23.62"D x 47.83"W x 33.88"H

**Carton size:**

46.06" x 6.29" x 22.04"

**GW/NW (LBS): 26.45 / 16.76**

**Each box is UPSable**

**Or 20 per pallet**

### FEATURES

- Beautiful hand-woven wicker bench with robust powder coated steel frame
- Easily assembles for a quick seating solution
- Silver feet caps add a sophisticated touch
- Lightweight for ease of mobility and durable for long lasting use



**Ships  
complete in  
1 box!**



# Cast Aluminum KD Bench

## Product Specs

**Size:**

40.55" x 23.62" x 33.46

**Carton size:**

40.15" x 23.22" x 4.72"

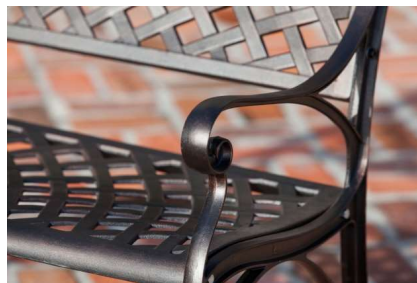
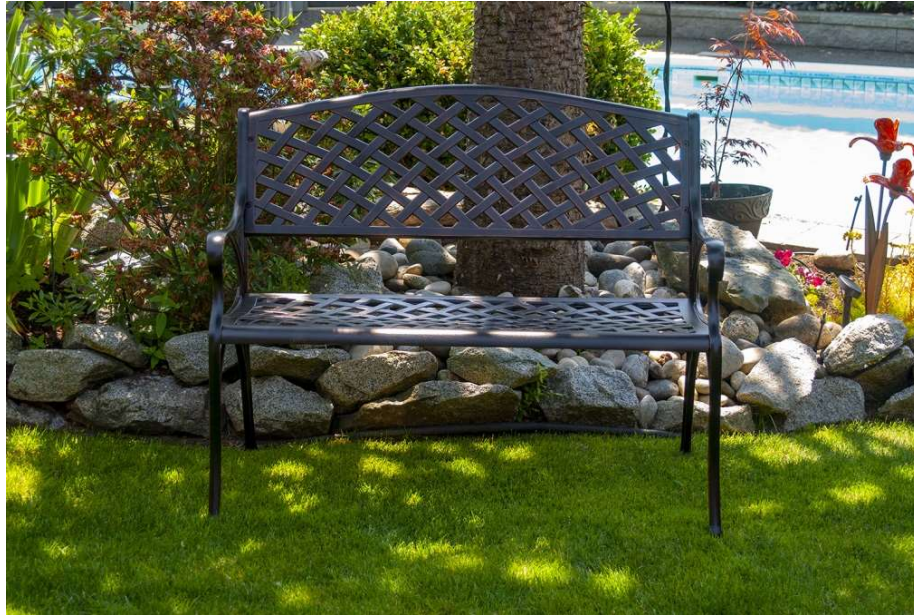
**GW/NW (LBS): 28.79 / 25.35**

**Each box is UPSable**

**Or 24 per pallet**

### FEATURES

- Beautiful KD cast aluminum bench in antique bronze finish
- Maintenance-free outdoor seating
- Easy assembly
- Lightweight for ease of mobility and durable for long lasting use
- Our unique die casting process provides superior finishing and consistency over sand casted products



**Ships  
complete in  
1 box!**

# Paradise Cast Aluminum Bench



## Product Specs

**Size:**

40.55" x 23.62" x 33.46

**Carton size:**

40.15" x 23.4" x 4.4"

**GW/NW (LBS): 29.89 / 25.13**

**Each box is UPSable**

**Or 24 per pallet**

### FEATURES

- Beautiful KD cast aluminum bench in antique bronze finish
- Maintenance-free outdoor seating
- Easy assembly for a quick seating solution
- Lightweight for ease of mobility and durable for long lasting use
- Our unique die casting process provides superior finishing and consistency over sand casted products



**Ships  
complete in  
1 box!**

# Rosalie KD Cast Aluminum Bistro Set

## Product Specs

**Size:**

Table: 23.62"D x 26.77"H

Chair: 14.96" x 16.5" x 35"

**Carton size:**

24.4" x 23.62" x 4.72"

**GW/NW (LBS): 28.66 / 24.56**

Each box is UPSable

Or 24 per pallet

### FEATURES

- Beautiful KD cast aluminum bistro Set in antique bronze finish
- Maintenance free outdoor dining
- Easy assembly for a quick dining solution
- Lightweight for ease of mobility and durable for long lasting use
- Our unique die casting process provides superior finishing and consistency over other sand casted products



Ships  
complete in  
1 box!



# Paradise KD Cast Aluminum Bistro Set

## Product Specs

**Size:**

Table: 23.62"D x 26.77"H

Chair: 14.96" x 16.5" x 35"

**Carton size:**

40.14" x 23.62" x 4.72"

**GW/NW (LBS): 30.3 / 28.66**

Each box is UPSable

Or 24 per pallet

### FEATURES

- Beautiful KD cast aluminum bistro Set in antique bronze finish
- Maintenance free outdoor dining
- Easy assembly for a quick dining solution
- Lightweight for ease of mobility and durable for long lasting use
- Our unique die casting process provides superior finishing and consistency over other sand casted products



Ships  
complete in  
1 box!



# KD Deck Box

## with seat cushion

*Available in 2 sizes*

### Product Specs

**PF-AC-209C-BR**

**Size:** 35"L x 22"W x 24"H  
(10.6 cu. Ft.) (80 gallons)

**Carton size:**

**35.8"L x 24"W x 5.91"H**

**GW/NW (LBS): 28.66 / 22.05**

**Each box is UPSable**

**Or 20 per pallet**

**PF-AC-234C**

**Size:** 51.18"L x 27.95"W x 25"H  
(20 cu. Ft.) (154 gallons)

**Carton Size:**

**51.97"L x 28.74"W x 5.71"H**

**GW/NW (LBS): 44 / 37.5**

**Each box is UPSable**

**Or 10 per pallet**

### FEATURES

- Beautiful water resistant KD deck boxes to store cushions and pillows include water resistant liners
- Durable reinforced top doubles as a chair and Includes 5cm 180gr poly top seat cushion
- Hand woven PE wicker and durable powder coated steel frame provide top quality comfort & durability
- Gas strut pump for easy lifting
- Silver foot caps add a touch of elegance



Greize wicker (grey and beige) with dark grey cushions



Great for cushion storage



Doubles as an extra seat



Silver foot caps



Water resistant liner



pump



Reinforced lid



**Ships complete in 1 box!**



Outdoor Furniture



Outdoor Heating



Planters



Screen Doors



Indoor Heating



Indoor Furniture

In business for over 35 years, JR Home actively sells to home improvement retailers across Canada. Our niche is providing quality, innovative, home-based lifestyle products from around the world to North American retailers both online and Brick and Mortar

We actively invest in innovative products, customer support, sales management, and marketing. We offer clients logistics support through our domestic warehouses and direct import opportunities.

JR Home also has international product development and sourcing offices in China and Vietnam. Core categories include: Outdoor Furniture, Outdoor Heating, Planters, Indoor fireplaces and stoves, indoor furniture, mantels and screen doors.

### ***Sit Back, Relax, Stay Warm.***

Style and trend management, keeping you ahead of the curve.

Customer centric supply chain and inventory management.

World class post sales support for our collective customers.

Innovation through products and marketing.

Domestic logistics infrastructure with East/West warehousing.

In Store service team to help create a universal shopping experience

**Customer Service:** (800) 561.5550 or [customer@jrhome.com](mailto:customer@jrhome.com)

**Sales:** [sales@jrhome.com](mailto:sales@jrhome.com) | **Fax:** (888) 525.6425

[www.jrhome.com](http://www.jrhome.com)

**Head Office:** Unit 306 – 19100 Airport Way, Pitt Meadows, BC Canada V3Y 0E2  
**Eastern Office:** Units 7-9, 4025 Sladeview Cres., Mississauga, ON Canada L5L 5Y1